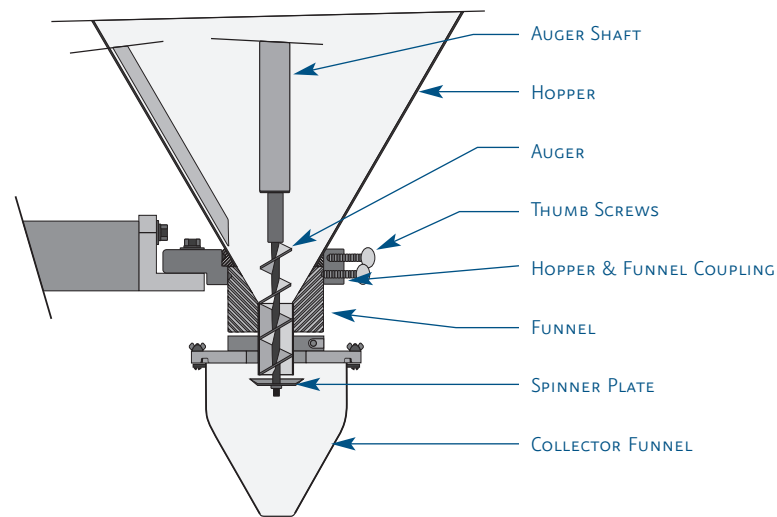


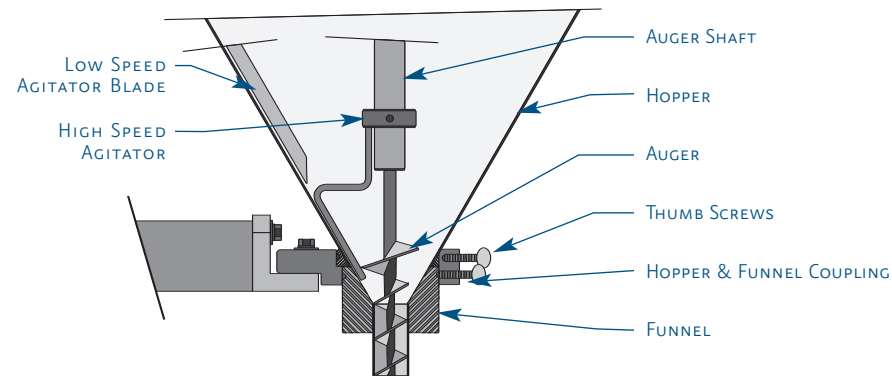
PRODUCT TOOLING



FREE FLOWING POWDERS & GRANULAR PRODUCTS

Free flowing spinner assembly with collector funnel gives positive filling control.

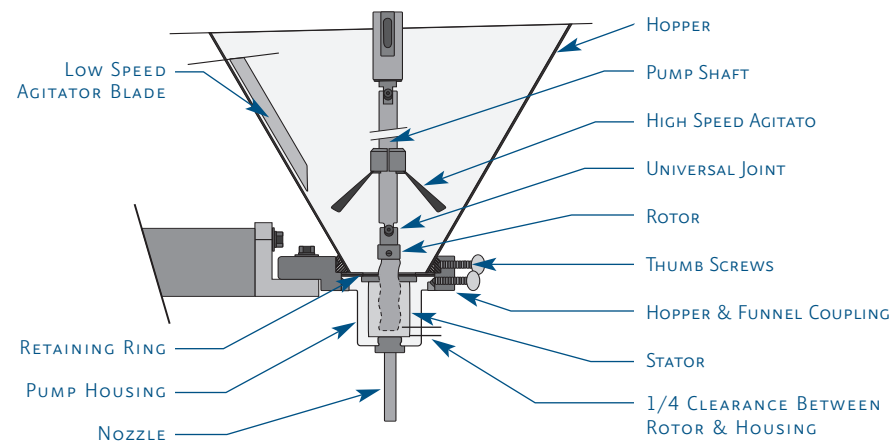
Note: The clearance between the auger & inside of funnel to suit a specific material to eliminate product breakage of fragile materials.



NON-FREE FLOWING POWDERS & GRANULAR PRODUCTS

Non-free flowing stainless steel auger and agitator blades meter precisely, without product bridging in stainless steel hopper.

Note: Self-feeding augers have large overflights in hopper. Straight augers have a constant diameter (no overflight).

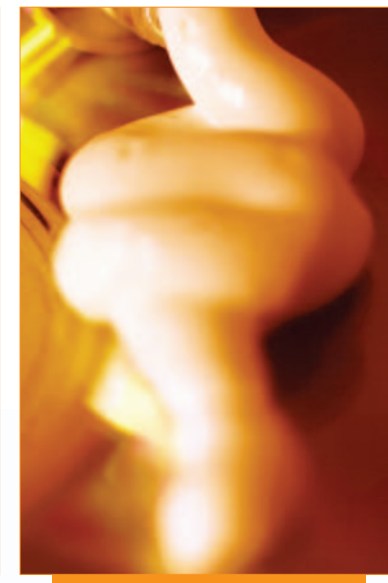


LIQUIDS, PASTES AND CREAMS

Positive displacement stainless steel pump dispenses viscous liquids, pastes, creams and slurries.



IMAGE fillers INC



FILLING SPECIALISTS

- Powder
- Granular
- Free Flowing
- Non-Free Flowing Products
- Paste
- Creams
- Liquids



CALL US TOLL-FREE
800.466.4710

• IMAGE fillers INC

Powder, Granular, Free Flowing, Non-Free Flowing Products, Paste, Creams, and Liquid Filling Specialists

735 Fox Chase, Suite 111, Coatesville PA 19320

phone: 800.466.4710 - 610.466.1440

fax: 610.466.1445 • email: imagefillers@aol.com

"When Knowledge and Experience Are Indispensable"



IMAGE FILLERS INC

"When Knowledge and Experience Are Indispensable"

From our many years of experience in the industry, we understand our customers and their business concerns, especially when it comes to minimizing operational downtime. From providing master-engineered new auger fillers to cost-effective supply parts, to refurbishing older equipment and providing warranties, Image Fillers, Inc. is focused on providing our customers with the highest quality products and service to fulfill their image of how business should be done.

- Master-Engineered Filling Equipment
- Simple, Effective Designs for Quick Tooling Change
- Easy to Maintain Machines
- Operator Friendly Controls
- Filling Accuracy
- Years of Experience and Knowledge
- Cost Effective, Solution Based Products and Service



IMAGE 2000

(SEMI-AUTOMATIC)

Our number one selling unit. The Image 2000 is free standing or can be mounted on a form fill seal machine. It operates simply by entering the number of turns that you want the auger or pump to turn. The auger/pump will then meter out the desired amount of product. Typical accuracy for the Image 2000 is +/- 1%.

STANDARD FEATURES INCLUDE:

- Anodized Head Casting
- Stainless Steel Box Frame
- 16 Gallon Hopper w/ Quick Release Clamps
- Blade to sweep inner wall of Hopper

OPTIONAL:

- Servo Drive
- Allen Bradley PLC
- Pneumatic Lift
- Vibration
- Mounted on form fill seal machine



IMAGE 2500

(SEMI-AUTOMATIC)

The Image 2500 is built for speed and accuracy. Allen Bradley PLC and Servo Motor are the standard but we also offer GE Fanuc. The PLC stores recipes for easy operator control. Both the Image 2000 and Image 2500 can be automated at a later date.

STANDARD FEATURES INCLUDE:

- Anodized Head Casting
- Stainless Steel Box Frame
- 16 Gallon Hopper with Quick Release Clamps
- Servo Drive
- Allen Bradley Panelview 300
- Allen Bradley Micrologics 1500 PLC



IMAGE 3000

(SINGLE HEAD AUTOMATIC)

The Image 3000 utilizes an eight foot stainless steel automated conveyor with indexing pins to move the container down, stop it under the fill station and fill, then index it out of the fill station. The filler can be mounted on a stainless steel frame or a full size base.

STANDARD FEATURES INCLUDE:

- Anodized Head Casting
- Stainless Steel Box Frame
- 16 Gallon Hopper with Quick Release Clamps
- Electric Clutch Brake
- Motor Protection
- Agitation
- Stainless Steel Indexing Conveyor

OPTIONAL:

- Servo Drive
- Allen Bradley PLC
- Pneumatic Lift
- Vibration
- 36", 48", and 60" diameter unscrambling and accumulation tables (pictured here with two 36" tables)



IMAGE 4500

(DUAL HEAD AUTOMATIC)

The Image 4500 consists of (2) separate filling heads with one common conveyor. Both heads can be operated individually or together. This machine can be set up for bulk and dribble applications or 100% at each station.

STANDARD FEATURES INCLUDE:

- Anodized Head Casting
- Stainless Steel Box Frame
- Motor Protection
- Agitation
- Stainless Steel Automated Conveyor with Indexing Pins

OPTIONAL:

- Servo Drive
- Allen Bradley PLC
- Pneumatic Lift
- Vibration
- Enclosed Base (pictured here)

▪ Additional filling machines manufactured, upgraded and serviced by **Image Fillers, Inc.** include:

Twin Head/Single Hopper, Automatics, Multi-fill, and Rotary Filler Machines

▪ Servo retrofits available for all your existing auger fillers